

Mary's Prayer Garden

WHY:

- Promote a devotion to and honor our Blessed Mother
- A beautiful prayer space for future generations of OLMC parishioners
- OLMC statue to accentuate our church
- Project has been approved by the Bishop

HOW:

- Our Lady Statue paid for by a generous parishioner
- Landscaping/Statue installation:
 - a. Diocesan Savings (Sale of Rectory)
\$128K
 - b. Living Christ Money remaining after bathroom renovations - \$15K
 - c. Parishioner donors/sponsors – we will not do a campaign to raise funds.

WHEN: Pending feedback and Finance/Diocesan approval.

WE WELCOME YOUR PRAYERFUL CONSIDERATION...

Please contact Kim, Fr. Chris or a Finance Council Member with your feedback:

Kim: olmcchurch30@gmail.com

419-836-7681

Fr. Chris: chrispastor@stiggys.org

419-639-1150

Westlick Landscape and Irrigation

3146 Pickle Rd
 Oregon, OH, 43616
 westlicklandscape@yahoo.com
 fb.me/westlicklandscape
 419-779-0161



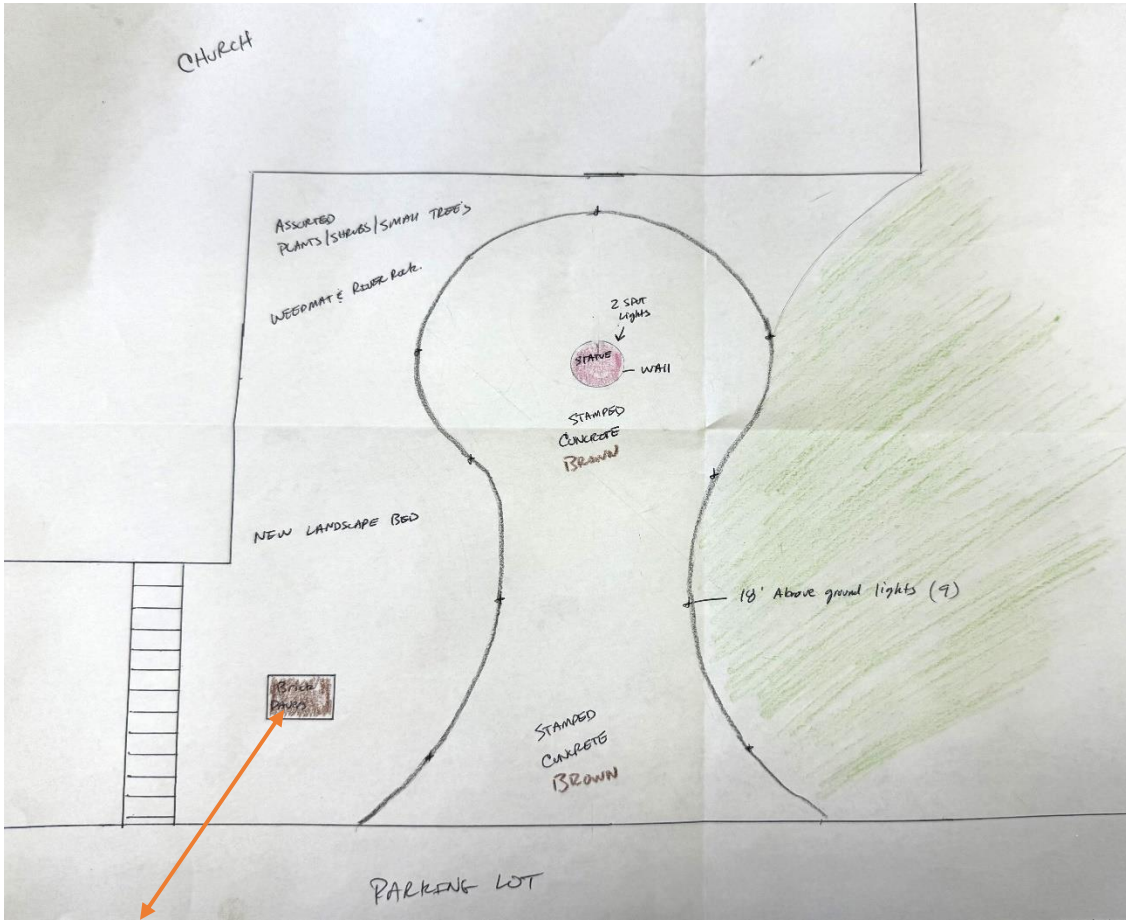
Estimate

Estimate No: 407
 Date: 12/13/2024

For: Our Lady Of Mt Carmel
 olmcchurch30@gmail.com
 1286 Elliston Rd

Description	Quantity	Rate	Amount
Install a concrete footer for new statue. Footer will be 36 inches deep and 3 to 4 foot above ground. Excavate land and apply stone sub base for either concrete or brick patio. Construct a retaining wall around statue, to make statue the focal point. Decorative caps will be installed on top layer.	1	\$0.00	\$0.00
To provide all of the above services with decorative stamped concrete	17,600	\$1.00	\$17,600.00
Install landscape bed with perennials and river rock as seen on print.	3,400	\$1.00	\$3,400.00
Install 2 low voltage spot lights that will shine on the new statue. Also install 9 perimeter lights surrounding the patio. Lights will run off a low voltage photo cell condenser.	1	\$3,400.00	\$3,400.00
Subtotal			\$24,400.00
TAX 0%			\$0.00
Total			\$24,400.00
Total			\$24,400.00

Landscaping & Electrical work by parishioner volunteers could lower these 2 costs.



Memorial bricks to be donated by Westlick Landscape.

Awaiting quotes from the following:

1. Moritz Landscaping
2. Nil Gallagher, Inc.

Parishioners will be updated when they are received.

